

GRADUATE HOUSE

JOIN US

Be a part of
a prestigious
collegium

LIVE HERE

A residential
college for
Graduates

MEET HERE

Friendly and
welcoming
services



Graduate House is located in Melbourne, one of the most liveable cities in the world.

We are affiliated with The University of Melbourne, the number one ranked university in Australia and located in the heart of its graduate precinct.

Updated: 22/01/2024

Contents

JOIN US

- 5** About Us
- 6** Who We Are
- 8** Our History
- 10** Types of Membership and Entitlements

LIVE HERE

- 13** Our Accommodation Facilities
- 14** Our Accommodation Types
- 16** Staying at Graduate House

MEET HERE

- 19** Meeting and Function Services
- 20** Our Meeting Rooms
- 24** Room and Spaces for Hire
- 26** Delegate Packages

DINE HERE

- 30** Dining Events Menus

MEMBERS BENEFITS

- 37** Reciprocal Clubs
- 46** Car parking
- 47** Communications
- 48** GU Collegiate
- 49** Merchandise
- 50** We acknowledge our donors

JOIN US

Enjoy the benefits of
The Graduate Union Membership





About Us

The Graduate Union and Graduate House are unique.

We are an association of graduates, a graduate residential college and a graduate meeting place. It was established in 1911 as a graduate membership association with The University of Melbourne. We have been a residential college since 1962.

We promote lifelong sharing of knowledge and skills; and educational outcomes for wider public benefit through our relationships with like-minded organisations around the world who share our enthusiasm for fostering academic, career and social experiences.

We provide high quality accommodation and meeting facilities for graduates and visiting academics as the bases from which learning, collegiality and collaboration may flourish.

Each year more than 600 graduates from all over the world reside here. Each month over 2,000 people meet in our facilities to advance research, careers, social good and lifelong learning.

Who We Are

A Union of Graduates

We began as a membership association in 1911. Women and men of different ages, disciplines and nationalities met to keep alive their university experience and resolved to support new graduates in the transition from undergraduate studies to careers and life-long learning.

The Graduate Union is now a charity and a not-for-profit membership association of graduates from the world's universities. Resident Members, one part of this membership, are enrolled in programs of study or are visiting academics. Non-resident Members do not live in college and are in Melbourne or elsewhere in the world.

Mission

The Graduate Union seeks to bring together graduates — through careers, caring roles and in retirement — in an active international membership network, residential college and meeting place for the socially responsible advancement and application of education.

A House for Graduates

Since the late 1950s, graduates from universities around the world have stayed at Graduate House. They come to Graduate House to study, tutor and teach, research, collaborate, develop professionally and network.

People just like you raised money and bought and developed property to grow Graduate House into what it is today: three college wings plus two off site premises of college accommodation. We entrust you with this stewardship to continue to protect and grow our 'house' for the benefit of the generations of graduates who will come here in the future.

Values of Members

- collegiality;
- universal friendship;
- social conscience and responsibility;
- intellectual challenge and contribution;
- life-long learning; and
- intercultural and interdisciplinary experiences.

A Meeting Place for Graduates

Over 30,000 people meet at Graduate House each year. Our meeting services are for charities, not-for-profits, universities and government groups to hold board and committee meetings, training sessions, dinners, social functions, seminars, conferences, alumni reunions, graduations and award ceremonies.

Resident Members invite guests to Graduate House and encourage other students to join either as Non-resident University Student Members or as Non-resident Members (e.g., for those who are in the workforce, a caring role or retirement). Membership gives discounts and access to an influential international community. It also looks good on the resume!

Values of the Organisation

- responsibility, accountability and stewardship;
- contribution and performance;
- professionalism, integrity, transparency and ethics;
- respect for differences and integration with diversity; and
- focus on the strengths and integration of undergraduates and graduates.

Lifespan of Membership

Our Members are from all stages of the 'graduate pathway':

- just graduated;
- in postgraduate study;
- early in a career;
- caring for children;
- mid-career;
- caring for elderly relatives;
- returning to study;
- late in a career;
- in full or semi-retirement; and
- in volunteer work.

Equity and Diversity

From the start of our Association we have adhered to an egalitarian ideology.

We have the explicit expectation that all Members are lifelong influencers for equity and diversity, and work to sustain and grow this Association likewise into the future.

The Graduate Union boasts a rich history spanning over 100 years. Here are some of our major milestones, esteemed members and fond memories.

1911

Meetings are held in the rooms of Dr J W Barrett at 105 Collins Street, Melbourne.



Dr Helen Sexton, Professor Georgina Sweet and Mrs Edith Cherry elected on the 29th April, 1911 to a provisional committee.



14th July, 1911
Sir John Monash becomes the Association's first President.



1919

Sir Robert Gordon Menzies, later the 12th Prime Minister of Australia, acts as honorary Secretary-Treasurer.



1926

Philanthropist Sidney Myer gives an endowment to secure the future of Monthly Luncheons. These continue today.



1936

At the annual general meeting (AGM), membership of the Association stood at 453 which included 60 life members with another 150 prospective members who had already been enrolled by the University Union.

1948

The first paid Secretary and staff member of the Association, William (Bill) Berry, is appointed.



Barbara Funder, Assistant Secretary-Warden to Bill Berry.



1950

The first Melbourne Graduate Magazines are published.



1957

Gladstone Terraces from Grattan Street to 222 Leicester Street is purchased.



1962

The first stage of Graduate House as a residential college opens for seven graduate residents.



1965

The second stage of the terraces is opened by Sir Rohan Delacombe and Chancellor of The University of Melbourne, Sir Arthur Dean.



1970

The three terraces from 210 to 214 Leicester Street are purchased through benefaction from Stella Mary Langford.



1971

The third stage of the terraces are opened. The library is named after Sir William Johnston, the 2nd President of The Graduate Union.



1972

Graduate House is affiliated as the eleventh residential college of The University of Melbourne. It remains the graduate-only college.



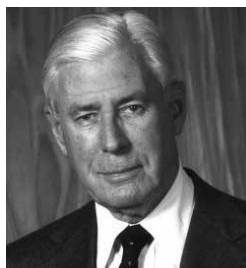
1974

Kidd's Warehouse, from 216 to 220 Leicester Street, is purchased and is later (2005) redeveloped to form the current four-storey middle wing of the residential college.



1988

The Ian Potter Foundation gives a generous donation which is used to improve dining and meeting facilities.



1991

The Graduate Union became an Incorporated Association.



2005

The central four-storey wing is opened and has 58 ensuite rooms, a large ground floor dining room and lounge, an industrial kitchen and the Stillwell and Ian Potter meeting rooms.



2010

The redeveloped Stella Langford Wing opened with meeting rooms, residential self-contained apartments and a multi-storey carpark.



2011

The Graduate Union celebrates Centenary year with various functions held throughout 2011. Founders Day on 14th July marked the date of the formal commencement of The Melbourne University Graduates Association.



2012

William Berry Dinner celebration on 13th July marked 50 Years of Graduate House as a residential college.



The new Phillip Law Members Lounge was named to honour the generous bequest of Dr Phillip Garth Law.



2016

Acquisition of 13 units of self-contained apartments on 50 Barry Street, Carlton.



2018

Acquisition of 18 units of self-contained apartments on 24 Barkly Place, Carlton



Types of Membership and Benefits

	Who can Join
Individual Membership	
Life Subscriber	This is for graduates who seek a lifetime membership. Life Subscriber Membership is the perfect graduation gift.
Resident	Open to graduates of universities around the world who seek to reside in a graduate college to study, undertake a sabbatical, lecture, research or other university-related activities.
Regular	Open to graduates of universities around the world, our non-resident Members who are in careers, in caring roles or retired and are from all fields and disciplines.
Associate	Open to administration staff of tertiary institution, spouse of a Graduate Union member and those who have not had the opportunity to gain a degree and who want to contribute to education.
Daily	Open to those seeking to access Graduate House for the day (e.g., to use the car park while attending a meeting, seminar, conference or function at Graduate House)
Organisation Membership	
Not-for-profit group	Open to charities, not-for-profits, professional development agencies, university departments and schools, Local/State/Federal/International Government groups, as well as alumni reunion groups, book clubs and language learning groups.
For-profit organisation	Limited openings for businesses so that they can hold professional development courses, board meetings and conferences. Membership is subject to demonstration of corporate social responsibility (e.g, pro bono service).

Cost (annually unless specified)	Benefits
\$1,500 (one time)	<ul style="list-style-type: none"> • Use Graduate House Accommodation, Bar and Dining facilities • Attend all events and functions at member's price • Use the premises for catered meetings and functions • Use of reciprocal arrangements and discounted services • All members in these categories (except Associates) are entitled to vote at elections and general meetings. Associate members are welcome to attend the GU AGM (Annual general meetings).
\$115	
Metro Melbourne, aged<60 \$150, Metro Melbourne, aged<60 \$125, Regional, interstate and International \$125	
\$125	
\$ 17.50 per day	Use the car park for the day.
\$ 500	Have access to: <ul style="list-style-type: none"> • Our meeting room facilities; • Free room and equipment hire for catered functions and meetings; • Accommodation at Graduate House • All Graduate House events and functions • The use of our reciprocal arrangements and in-house discounted services
\$ 1500	

LIVE HERE

A residential college for Postgraduates



Our Facilities

Graduate House presents a unique environment for supporting professional and academic development. It is a residential college for graduate university students. It is a perfect “home away from home”.



Our Accommodation Facilities

Located in the heart of Melbourne University’s graduate precinct, and five minutes away from Melbourne Central Business District, Graduate House is the perfect place to stay.

Members of Graduate House who are enrolled for graduate tertiary study have priority bookings in our residential college. These facilities range from fully-furnished and equipped apartments, bedsits with en-suite and small kitchen, and en-suite single and double rooms with no kitchens. Breakfast and weekday dinners are included.

Stay here if you are:

- a student enrolled for graduate coursework or research studies;
- a visiting academic, speaker, clinician or researcher;
- attending a meeting or function at Graduate House or at a Melbourne-based university;
- needing temporary accommodation before finding something more permanent;
- wanting to visit a relative or friend in hospital, or needing to receive regular outpatient treatment at one of Melbourne’s major hospitals; and
- working in the precinct for a few days a week.

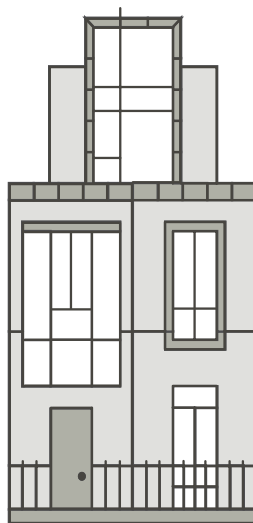
For inquiries into our accommodation facilities, please contact our Accommodation Manager on 03 9347 3428 or email us at: admingh@graduatehouse.com.au

Our Accommodation Types



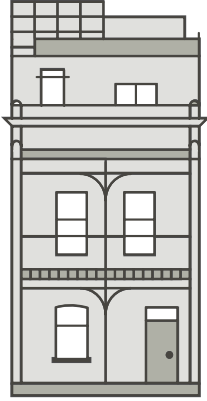
William Berry Wing

The terraces from 222 to 234 Leicester Street are known as the William Berry Wing. Rooms in this wing are fitted with either a single or double sized bed, cupboard space, writing desk and chair. They contain reverse-cycle air conditioners, a small washing basin (most rooms) and basic electronic appliances, such as lamps. Bathrooms are nearby in a room down the corridor, each terrace Resident Member sharing a bathroom with 3–5 other residents. Some of the larger terrace rooms have balconies.



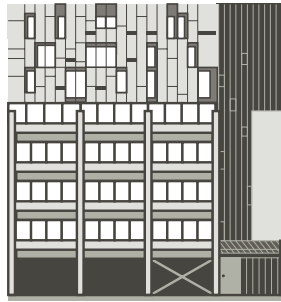
Main Central Wing

The central building at 216 to 220 Leicester Street is known as the Main Wing. Rooms in this wing are fitted with either a single or double bed and an en suite. Each room contains reverse cycle air conditioning, basic electronic appliances, a small refrigerator and a desk.



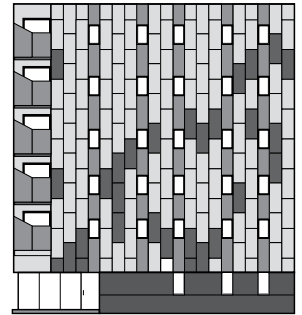
Stella Langford Wing

The building from 210 to 214 Leicester Street is known as the Stella Langford Wing and contains self-contained apartments. Each apartment contains a queen size bed, a bathroom, a fully-equipped kitchenette, a small laundry, a desk, basic electronic appliances, a television and a lock-up safe.



Barry Street

The Barry Street Apartments are located at 50 Barry Street, Carlton, just a 5-minute walk from Graduate House. There are 13 self-contained apartments, each with a single bed, bathroom, and kitchenette.



Barkly Place

The Barkly Place Apartments are located at 24 Barkly Place, Carlton, just a 5-minute walk from Graduate House. There are 18 self-contained apartments, each with a single bed, bathroom, and kitchen.

Staying at Graduate House

To enquire about a stay at Graduate House phone 03 9347 3428 or email admingh@graduatehouse.com.au for a prompt response.

Visit the Live Here tab at www.graduatehouse.com.au for more information about room types, pricing according to length of stay, and other college facilities and services.

Prices indicated are per week		William Berry Wing		
		Shared Bathroom		
		One or Two People		
		With or Without Balcony		
Length of Stay	Nights	Single	Double	Apartment
12 Months	365plus	\$392 – \$406	\$420 – \$574	\$553 – \$686
7 – 11 Months	183 – 334	\$399 – \$413	\$427 – \$588	\$567 – \$700
3 – 6 Months	92 – 182	\$420 – \$434	\$448 – \$602	\$595 – \$728
1 week – 3 Months	7 – 91	\$427 – \$441	\$455 – \$616	\$602 – \$735
Per Night	1 – 6	\$90 – \$95	\$110 – \$133	\$120 – \$139

Residency fee includes:

- five dinners and seven breakfasts per week (subject to change on public holidays);
- bed-linen and towels, changed regularly and according to stay duration (pillows and covers are provided);
- room housekeeping, undertaken regularly and according to stay duration;
- standard Wi-Fi (suitable for web browsing and emails) with upgrades for greater usage requirements;
- all utilities (gas, electricity, water and waste management);
- access to communal spaces including a Resident's Kitchen, games room, TV room, library and study nooks.

Main Building		Stella Langford Wing	Barry Street/ Barkly Place
En Suite			
		One or Two People	
		Kitchenette, Washing Machine	Kitchenette
Single	Double	Apartment	Single
\$462	\$518 – \$721	\$763 – \$973	\$469
\$469	\$525 – \$742	\$784 – \$994	\$476
\$490	\$546 – \$777	\$784 – \$994	\$497
\$497	\$560 – \$784	\$826 – \$1015	\$504
\$110	\$115 – \$150	\$140 – \$181	\$115

MEET HERE

Friendly and welcoming services



Some of our Current Organisational Members



The University of Melbourne (UOM)



Association of German Teachers of Victoria (AGTV)



Australian New Zealand Association of Psychiatry (ANZAPPL)



Construction, Forestry, Maritime, Mining and Energy Union (CFMEU)



Dental Health Services Victoria



First Super



Homes Victoria



Leadership Victoria



Lysander



Mental Health First Aid



Peter MacCallum Cancer Centre



RMIT Global Business Innovation



Rotary Club of Carlton



Per capita Australia



Turkish Teachers Association

Meetings and Function Services

Graduate House continues its longstanding tradition of excellent service by providing organisations with modern academic meeting facilities.

Our Meeting Rooms

Graduate House has a range of meeting and function spaces that can be configured flexibly for 2 to >100 people. It has in-house catering, friendly, welcoming and professional service. Packages are tailored to suit all types of formal and informal meetings and functions.

Organisational Membership		
	Non-for-profit group	For-profit organisations
Eligibility to join the Membership group	Charity, not-for-profits, university and government groups	Businesses that are for profit and that act with social responsibility
Cost	\$500.00*	\$1500.00*
Annual Renewal Fees	✓	✓
Car Park — daily fee	If delegates become a Daily Member \$17.50 Otherwise — \$20.00 as a non-member	
Meals and beverages	As per the cost of catering per head provided for the group meeting	
GU Collegiate functions	NA	
For all membership options, including individual memberships, please go to this link on our website: https://www.graduatehouse.com.au/join-us/types-of-membership/		

Ian Potter Room

The Ian Potter Room is the quintessential meeting space with audio visual equipment and presentation aids. It can also be transformed into a beautiful dining room.



Stillwell Room

The Stillwell Room is adjacent to the Ian Potter Room. Both rooms can be combined into one large space. Its well lit space and direct access to the Dining Room make it a perfect function space for dining events, or academic and professional development meetings.



Johnston Library

The Johnston Library, located in the original William Berry Wing Terrace Building, offers a tranquil atmosphere reflecting a bygone era. Ideal for intimate meetings, private dining and afternoon tea.



Courtyard

The ideal summer area to book your next group lunch, BBQ or end of year party. Special private accesses and BBQ packages are available. Configurations and capacity for BBQ or Function is 50.



Hewlett Room

The Hewlett Room is situated in the fully facilitated Stella Langford Wing. The space is perfect for smaller meetings and functions, working lunches and conference calls. Shown in the image below is an example of a U-Shape set-up.



Cochrane Room

The Cochrane Room is the end room in the Stella Langford wing. Like the Hewlett Room, it is ideal for small functions or intimate gatherings. Shown below is an example of a Boardroom set-up.



Taylor Room

Like the Hewlett and Cochrane Rooms, the Taylor Room is best suited to smaller groups. Shown in the image below is a classroom set-up.



Stella Langford Wing (Two or Three Room combination)

The Hewlett, Taylor and Cochrane rooms can be combined to form large academic and professional development spaces for all occasions. The three room combination is our largest setup.



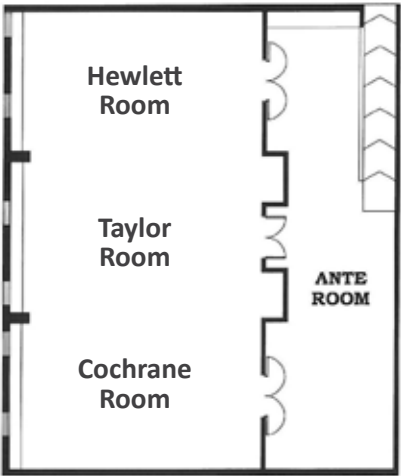
Rooms and Spaces for Hire

The layout of each Room Space is illustrated here.

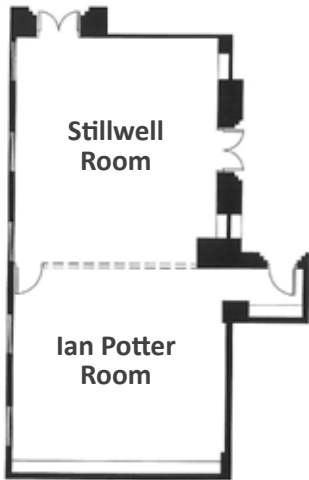
Room hire is waived for the catered events of Organisation members. Non-member groups and organisations may hire the rooms and spaces.

Room hire rates for other rooms are negotiable. The Graduate Union prefers not to hire out rooms and spaces for non-catered events; and adds a surcharge accordingly.

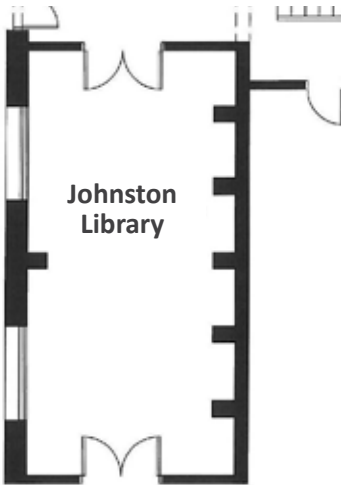
Package and room hire cost are indicative. meeting and functions in the evenings and on weekends incur greater charges.



Hewlett/Taylor/Cochrane



Stillwell/Ian Potter



Johnston Library

Rooms and Spaces Available for hire

Area (mm²)	Room or Space	Maximum number of people for each space and configuration						
		Boardroom	Theatre	Classroom	Cabaret	Dining	U-shape	Cocktail
210-214 Leicester Street		Three ground floor spaces that can be combined to form a larger gathering space						
52	Cochrane	26	50	16	16	30	24	30
55	Taylor	26	50	16	16	30	24	30
50	Hewlett	26	50	16	16	30	24	30
105	2 rooms combined	-	100	40	42	60	33	90
157	3 rooms combined	-	150	56	70	100	55	120
216-220 Leicester Street		Two ground floor spaces that can be combined, plus lounge and dining room spaces						
56	Ian Potter	30	50	30	24	40	25	40
63	Stillwell	30	60	30	30	50	28	50
118	2 rooms combined	-	120	60	70	100	40	120
147	Dining Room	-	-	-	-	150	-	200
222-228 Leicester Street		Smaller spaces for meetings and special functions						
50	Courtyard	-	-	-	-	50	-	50
27	Johnston Library	10	-	-	-	20	-	30

Delegate Packages 2024

	Full Day	Half Day AM / PM
Per Person from: (Member Group) *	\$78.50	\$53.00
Per Person from: (Non Member) **	\$89.00	\$63.50
Catering		
On arrival: tea, coffee, juice and fruit	✓	✓
Morning / Afternoon Tea	✓	✓
Working or Buffet Lunch	✓	✓
Two or three course set menu		
Hot and cold canapés		
Mints and water on tables	✓	✓
Menu designed to your requirements		
Audio-Visual		
Data Projector and screen	✓	✓
Whiteboard with markers	✓	✓
Flipchart paper and markers	✓	✓
Internet Connection		
Wi-Fi	✓	✓
Optional Extras		
Room Hire *	Organisational Members: Room hire is waived for catered events. Organisational non-members: Room hire fee of \$200 for half day (morning or afternoon), and of \$350 for a full day or an evening session. Organisational membership is recommended for those convening more than one event per year. * Charges are applicable for breakout spaces.	
Zoom Connections		
Meetings/ events	\$25.00 connection setup fee	

Graduate House provides a number of academic and professional development packages. These packages are tailored to suit all types of functions, both formal and informal.

Morning / Afternoon Tea	Working Lunch/ Dinner	Formal Lunch or Dinner	Cocktail Food	Buffet Menu
\$34.50	\$41.00	from \$65.50	from \$38.50	\$54.00
\$45.00	\$51.50	\$76.00	\$49.00	\$64.50
✓	✓			
✓				
	✓			
		✓		
			✓	
✓	✓			
				✓
✓	✓	✓	✓	✓
✓	✓	✓	✓	✓
✓	✓	✓	✓	✓
✓	✓	✓	✓	✓
Individual Members: Please seek a quote for room hire, and meeting and function services from the Hospitality Manager. The Association is a charity that pays salaries and all other costs for services before, during and after the event.				

DINE HERE

Freshly prepared food everyday



Dining Event Menus

Graduate House offers a wide range of dining options for those attending academic or professional development functions. Delegates have the option of enjoying breakfast, lunch or dinner in our Dining Room, choosing platters for a cocktail function, or choosing a set menu that is prepared by our in-house chefs.

Breakfast, Lunch and Dinner

Graduate House offers its Members quality meals at a reduced rate. Members can enjoy breakfast, lunch or dinner meals from Monday to Friday.

Breakfast

7:30am to 8:30am

Members \$14.00

Non-Members \$20.00

Dinner

6:00pm to 7:30pm

Members \$17.00

Non-Members \$22.00

Lunch

12:00noon to 2:00pm

Members \$14.00

Non-Members \$20.00

Morning or Afternoon Tea Menu

Please select two items from a range of sweet, savoury or healthy selection:

Sweet

Home-made scones with jam and fresh cream. (v)
Chef's selection of traditional slices/mini tarts from Sweet by Nature. (v)
A selection of biscuits. (v) *(gluten free options available)*
Belgian choc berry big love brownie. (v)(gf)(nf)
Assorted mini pastries /Danishes. (v)
Vegan J 'adore nut slice. (gf)(v+)
Lamingtons. (v+)(gf)(nf)

Savoury

Savoury scones. (v)
Selection of gourmet cheese and dried fruits. (v)(gf)
Croissants (tasty cheese and tomato). (v)
Mini pizzas. (v)
Gourmet sausage rolls.
Gourmet party pies.
Vegetarian mini quiche. (v)
Ricotta and spinach sausage roll. (v)
Spring rolls. (v)
Samosas. (v)

Healthy

Fresh fruit platter (gf)(v+)
Bircher muesli and fruit yoghurt (v)
Blueberry yoghurt (gf)(v)
Coconut yoghurt (v+)(gf)
Hummus and vegetable crudité (bite size raw seasonal vegetables) (gf)(v+)
Granola layered with Greek yoghurt and berries (v)
Carrot cake (v)
Banana bread (gf)*(vegan and gluten free options available)*
Date and walnut bread (v+)
Apple and cinnamon loaf (v)
Vegetarian finger sandwiches (v)
Friands - Orange, chia and poppy (gf), lemon and blueberry (v+)(nf)

*Vegetarian (v) *Gluten Free (gf) *Vegan (v+) *Nut free (nf)

Working Lunch or Dinner Menu

Monday

Vegetarian wrap (hummus, carrot, capsicum, spinach, cucumber and onion). (v)

Roast beef ciabatta roll with smoky roasted red peppers, cream cheese and rocket.

Spinach and ricotta ravioli with creamy pesto sauce and parmesan cheese. (v)

Fresh garden salad. (v+)(gf)

Fresh fruit platter. (v+)(gf)

Tuesday

Brie cheese and avocado panini with sundried tomato and basil. (v)

Chicken schnitzel caesar sandwich.

Vegetarian quiche. (v)

Fresh garden salad. (v+)(gf)

Fresh fruit platter. (v+)(gf)

Wednesday

pulled chicken burger.

Turkish bread filled with roast pumpkin, eggplant and goat's cheese. (v)

Lamb kofta with tzatziki.

Fresh garden salad. (v+)(gf)

Fresh fruit platter. (v+)(gf)

Thursday

Gourmet steak sandwich with caramelized onion and tasty cheese.

Falafel wrap with hummus and tzatziki sauce. (v)

Seasoned potato wedges with sour cream. (v)(gf)

Fresh garden salad. (v+)(gf)

Fresh fruit platter. (v+)(gf)

Friday

Smoked salmon wrap with capers and cream cheese.

Bread roll filled with egg, crispy lettuce, mustard and chives. (v)

Vegetarian dumplings. (v+)

Fresh garden salad. (v+)(gf)

Fresh fruit platter. (v+)(gf)

Lunch additions:

Assorted petit fours @ \$2.50 per person.

Assorted Slices @ \$2.50 per person.

Cheese platter @ \$3.00 per person.

*Vegetarian (v) *Gluten Free (gf) *Vegan (v+)

Private Dining Menu -Lunch or Dinner

MENU 1

2 Course Set menu — from \$65.50 per person.

3 Course Set menu — from \$79.00 per person.

Select one from each course, or two for alternating courses.

(minimum 15 guests required for alternating).

Entrée

Prawn, mango and avocado salad with lime. (gf)(df)

Smoked salmon and dill pesto penne pasta with fresh basil and grated parmesan.

Herb crusted beef with Dijon cream salad.

Warm chicken salad with balsamic vinegar. (gf)(df)

Grilled haloumi, tomato, cucumber and mint salad. (v)

Main Course

Tender roast lamb served with traditional roast vegetables and horseradish sauce. (gf)(df)

Eye fillet with peppercorn cream sauce and mashed potatoes. (gf)

Grilled salmon with fennel, red pepper, green olives and saffron orange vinaigrette. (gf)(df)

Creamy Tuscan chicken breast served with pumpkin and fresh spinach. (gf)

Spinach and cheese stuffed peppers. (v)

Dessert or Cheeses

Passionfruit cheesecake. (gf)

Pecan and walnut tart.

Mango peach mousse.

Creamy custard vanilla slice finished in white fondant.

Australian cheese plate with dried fruit. (gf)

Special dietary requirements and special menus are available on request.

Coffee, tea and chocolates included. Beverage packages are available for all functions either on a time or a consumption basis.

*Vegetarian (v) *Gluten Free (gf) *Vegan (v+) *Dairy free (df) *Nut free (nf)

Private Dining Menu -Lunch or Dinner

MENU 2

2 Course Set menu — from \$70.00 per person.

3 Course Set menu — from \$83.00 per person.

Select one from each course, or two for alternating courses (minimum 15 guests required for alternating).

Entrée

Half a dozen fresh oysters with raspberry vinegarette. (gf)(df)

Chicken, prawn, avocado and pecan salad. (gf)(df)

Peking duck salad. (gf)(df)

Warm balsamic lamb with pumpkin and fetta salad.

Stuffed Portobello mushrooms. (v)(gf)

Main Course

Eye fillet with mushroom ragout and creamy polenta. (gf)(df)

Herb crusted rack of lamb served with saffron couscous and baby carrots.

Chicken Piccata (lemon chicken with capers) served on a bed of mashed potato. (gf)

Soy, sesame and garlic marinated barramundi fillet served with Asian greens. (gf)(df)

Greek style vegetarian stuffed eggplant. (v)

Dessert or Cheeses

Tiramisu.

Berry cheesecake. (gf)

Lemon pistachio mousse.

Black forest cake.

Australian cheese plate with dried fruit. (gf)

Special dietary requirements and special menus are available on request.

Coffee, tea and chocolates included.

Beverage packages are available for all functions either on a time or a consumption basis.

*Vegetarian (v) *Gluten Free (gf) *Vegan (v+) *Dairy free (df) *Nut free (nf)

Cocktail Menu

Selection of 6 canapés – from \$38.50 per person. Premium finger food additional cost of *\$3.00 per person. Minimum 25 guests.

Please select any six from the following hot and cold canapé options:

Cold Canapés

*Mixed sushi platter (bite sized pieces of our most popular vegetarian, tuna, salmon and avocado). (gf) (premium)

*Vegetarian rice paper rolls. (v+) (gf) (premium)

*Peking duck pancakes. (premium)

*Little prawn cocktail crostini. (premium)

*Scallops with Pineapple salsa. (gf) (df) (premium)

Cucumber cups with dill cream and fresh prawns. (gf)

Smoked salmon bites.

Mini bun filled with smoked salmon, roquette, dill and crème fraîche.

Mini bun filled with egg and mayonnaise. (v)

Tomato & basil bruschetta. (v+)

Devilled eggs. (v)

Mushroom duxelles crostini. (v)

Mediterranean crostini (Ricotta topped with chopped olives, sun dried tomatoes. (v)

Finger sandwiches (roast beef & creamy horseradish / chicken & mayonnaise. (v) (gluten free options available)

Hot Canapés

*Panko crusted prawns with lemon and dill aioli. (premium)

Prawn dumplings.

Vegetarian dumplings. (v+)

Chicken and mushroom filo long nibbler.

Spinach and ricotta nibbler roll. (v)

Mini chicken satay skewers. (gf)

Crispy sweet chilli chicken tenderloins with Asian dipping.

Lamb Koftas with mint yoghurt. (gf)

Mini beef cheeseburgers.

Gourmet sausage rolls.

Mushroom and parmesan arancini balls with spicy tomato salsa. (v)

Homemade Middle Eastern falafel balls served with hummus dip. (v+) (gf)

Mini vegetarian pizza. (v) (vegan option available)

Mini vegetarian quiche. (v)

Chic pea and potato curry sausage roll. (v+)

Plant based vegan burger. (v+)

*Vegetarian (v) *Gluten Free (gf) *Vegan (v+)

Buffet Menu

Buffet Menus from \$54.00 per person

Option 1

Choice of roast (lamb, beef, chicken or pork).

Crispy roasted potatoes.

Marinated roast pumpkin.

Spinach and ricotta cannelloni.

Minted steamed peas.

Fresh garden salad.

Sticky date pudding served with butterscotch sauce and cream.

Fresh fruit platter.

Option 2

Chicken Cacciatore.

Gourmet mushroom risotto.

Steamed baby chat potato with fresh dill garlic and olive oil.

Garlic bread.

Steamed seasonal vegetables.

Fresh garden salad.

Bread and butter pudding with cream.

Fresh seasonal fruit platter.

Option 3

Thai chicken curry.

Steamed Jasmine rice.

Hokkien noodles with seafood or vegetarian.

Steamed Bok Choy with ginger and garlic.

Chinese stir-fry vegetables.

Steamed mini dim sims with soy sauce.

Creamed rice pudding.

Fresh fruit platter.

MEMBERS BENEFITS

Be a part of a prestigious collegium



Our Reciprocal Associations

Members of The Graduate Union have access to our many reciprocal associations and may take advantage of the discounts, bonuses and hospitality of our national and international partners.

Australia

Commercial Travellers' Association The Australian National University

MLC Centre, Martin Place
Sydney, New South Wales 2000
Australia
Phone: +61 2 9232 7344
www.ctabusinessclub.com.au/

Kathleen Lumley College

51 Finnis Street
North Adelaide, South Australia 5006
Australia
Phone: +61 8 8267 3270
www.kathleenlumleycollege.com.au/

Kelvin Club, The

14-30 Melbourne Place
Victoria 3000
Australia
Phone: +61 03 9654 5711
www.kelvinclub.com/

New South Wales Masonic Club

169-170 Castlereagh Street
Sydney, New South Wales 2000
Australia
Phone: +61 2 9284 1045
www.nswmasonicclub.com.au/

Royal Society of Victoria, The

9 Victoria Street
Melbourne, Victoria 3000
Australia
Phone: +61 03 9663 5259
www.royalsocietyvictoria.org.au/

University Club of Western Australia

35 Stirling Highway
Crawley, Western Australia 6009
Australia
Phone: +61 08 6488 8770
www.universityclub.uwa.edu.au/

University House at the Australian National University

The Australian National University
1 Balmain Crescent
Acton, Canberra 2601
Australia
Phone: +61 2 6125 5211
www.anu.edu.au/unihouse/

Canada

Dalhousie University Club

Dalhousie University

1459 Oxford Street, Box 15000

Halifax, NS B3H 4R2

Canada

Phone: 902-494-3492

www.dalclub.ca/

Faculty Club, The

University of Toronto

41 Willcocks Street

Toronto, Ontario M5S 1C7

Canada

Phone: +1 416 978 6399

www.facultyclub.utoronto.ca/

McGill Faculty Club and Conference Center

Faculty Club

3450 McTavish

Montreal, Quebec H3A OE5

Canada

Phone: +1 514-398-6391

www.mcgill.ca/facultyclub/

University Club

University of Saskatchewan

Box 388 - RPO University

Saskatoon, Saskatchewan S7N 4J8

Canada

Phone: +1 306 966 7774

www.usask.ca/uclub/

University of Alberta Faculty Club

University of Alberta

11435 Saskatchewan Drive

Edmonton, Alberta T6G 2G9

Canada

Phone: +1 780 492 4231

www.uofafacultyclub.ca/

The University Club of McMaster

McMaster University

1280 Main Street West

Hamilton, Ontario L8S 4K1

Canada

Phone: +1 905 525 9140

www.ucmcmaster.com/

University Club at Queens, The

Queen's University

168 Stuart Street

Kingston, Ontario K7L 2V8

Canada

Phone: +1 613 533 2846

www.queensu.ca/uclub/

University Club of Toronto, The

380 University Avenue

Toronto, Ontario M5G 1R6

Canada

Phone: +1 416 597 1336

www.universitycluboftoronto.com/

University Club at The University of Regina

University of Regina

215 College West Building

3737 Wascana Parkway

Regina, Saskatchewan S4S 0A2

Canada

Phone: +1 306 585 4747

www.uregina.ca/universityclub/

University Club of Victoria

University of Victoria

PO Box 1700 Stn. CSC

Victoria, British Columbia V8W 2Y2

Canada

Phone: +1 250 721 7935

club.uvic.ca/

France

Six Cottages in France

Cottages available in Lot, Dordogne, Tarn,
Gascony, Provence, Haute Provence,
Pyrenees
France
Phone: +61 3 5968 5279 (administration is
from Australia)
www.cottagesinfrance.com/

Hong Kong

Graduate House

University of Hong Kong

3 University Drive
Pok Fu Lam
Hong Kong
Phone: +852 2249 1801
www.hku.hk/gradhse

India

Baramati Club

Sayali Hills
Nhigwan Road, Baramati Pune 413,
Maharashtra
India
Phone: +91 9823 548049
www.baramaticlub.com

PYC Hindu Gymkhana

CST No. 766, F.P No. 244
Bhandarkar Road, Pune 411 004
Maharashtra
India
Phone: +91 20 2566 3006/7
www.pycgymkhana.com

Italy

ESU di Padova

Azienda Regionale per il diritto
All Studio Universitario
Via S. Francesco, 122
Padova 35121
Italy
Phone: +39 049 894 1160
www.esu.pd.it/

Universita' degli Studi di Sassari

Public Square University 21
Viale San Pietro 43/b, Sassari
P.I. 00196350904, Sardinia
Italy
Phone: +39 079 229 757
www.uniss.it/php/home.php

Netherlands

Amsterdamse Academische Club

University of Amsterdam

Oudezijds Achterburgwal 235, Amsterdam,
1012, Netherlands
Phone: +31 20 525 1570
www.aac.uva.nl/

Faculty Club Utrecht

Utrecht Universiteit
Achter de Dom 7
Utrecht 3512 JN
Netherlands
Phone: +31 030 253 9911
www.uu.nl/facultyclub

New Zealand

Auckland University Club

23-25 Princes Street, Auckland 1010
New Zealand
Phone: +64 09 373 7513
www.auckland.ac.nz

Singapore

National University of Singapore Society, The (NUSS)

9 Kent Ridge Drive
Singapore
Phone: +65 6467 4711
www.nuss.org.sg

NTU Alumni Club

11 Slim Barracks Rise
(off North Buona Vista Road)
Singapore 138664
Phone: +65 6777 1101
www.mtualumni.org.sg

Sweden

Fakultetsklubben Svarta Räfven

Karolinska Institute, Stockholm
Nobels Väg 5
Solna, Stockholm 17177
Sweden
Phone: +46 08 728 66 00

Stockholm University Faculty Club

KonFerensservice,
Stockholm SE 106 91
Sweden
Phone: +46 08 16 22 80
www.su.se/english/

United Kingdom

Burn, The

(occasional short term accommodation for overseas graduates)
Glenesk, Brechin
Angus DD9 7YP
United Kingdom
Phone: +44 0135 664 8281
www.goodenough.ac.uk

Goodenough Club (formerly London House)

Goodenough College
23 Mecklenburgh Square
London, England WC1N 2AD
United Kingdom
Phone: +44 20 7837 8831
www.club.goodenough.ac.uk/

Oxford and Cambridge Club

71 Pall Mall
London SW1Y 5HD
United Kingdom
Phone Number: +44 020 7930 5151
www.oxfordandambridgeclub.uk.com

Royal Society of Medicine, The

1 Wimple Street
London, England W1G 0AE
United Kingdom
Phone: +44 20 7290 2990
www.rsm.ac.uk/

St James's Club and Hotel, The

7-8 Park Place, St James'
London SW1A 1LP T
United Kingdom
Phone: +44 020 7629 7688
www.stjamesclub.co.uk/

St James's Club Manchester, The

45 Spring Gardens
Manchester, M2 2BG
United Kingdom
Phone Number: +44 0161 829 3000
www.stjamesclubmanchester.org/

United States

Bellevue Club, The

525 Bellevue Avenue
Oakland, California 94610
United States
Phone: +1 510 451 1000
www.bellevueclub.org

Brown Faculty Club

1 Magee Street
Providence, Rhode Island 02912
United States
Phone: +1 401 863 3023
www.brown.edu/Facilities/Faculty_Club/

Campus Club, The University of Minnesota

300 Washington Avenue SE
Minneapolis, Minnesota 55455
United States
Phone: +1 612 625 9595
www.campusclubumn.org

Campus Club, The University of Texas at Austin

1900 University Avenue
Austin, Texas 78705
United States
Phone: +1 512 471 8611
www.utexas.edu/campusclub/

Campus House

Buffalo State College
1300 Elmwood Avenue
Buffalo, New York 14222
United States
Phone: +1 716 878 3300
www.buffalostate.edu/campushouse/

Carolina Club The University of North Carolina

550 Stadium Drive
Chapel Hill, North Carolina 27514-0111
United States
Phone: +1 919 913 8134
www.clubcorp.com/Clubs/Carolina-Club

Cincinnati Faculty Club University of Cincinnati

7th Floor, Richard E. Linder Center
PO Box 210106
Cincinnati, Ohio 45221-0106
United States
Phone: +1 513 556 4154
www.uc.edu/facultyclub

Club at Spindletop Hall, The

3414 Iron Works Pike
Lexington, Kentucky 40511
United States
Phone: +1 859 255 2777
www.spindletophall.org/

Club at UC Santa Barbara, The University of California, Santa Barbara

Santa Barbara, California 93106-7040
United States
Phone: +1 805 893 3096
www.faculty-club.ucsb.edu/

College Club of Boston, The

44 Commonwealth Avenue
Boston, Massachusetts 02116
United States
Phone: +1 617 536 9510
www.thecollegeclubofboston.com/

Colonnade Club

University of Virginia
Pavillion VII - West Lawn
Charlottesville, Virginia 22903
United States
Phone: +1 434 243 9730
www.colonnadeclub.org

Columbia University Faculty House

64 Morningside Drive
Mail Code 2301
New York, New York 10027
United States
Phone: +1 212 854 1200
facultyhouse.columbia.edu/

Diamond Club, The

Temple University

Mitten Hall, Lower Level
1913 North Broad Street
Philadelphia, Pennsylvania 19122-6092
United States
Phone: +1 215 204 6622
www.templediamondclub.com/

Edmondson Faculty Center

University of Southern California

1969 Zonal Avenue, SRH-108
Los Angeles, California 90033
United States
Phone: +1 323 442 1591

Faculty Club, The

Southern Methodist University

3034 Daniel Avenue
Dallas, Texas 75275
United States
Phone: +1 214 768 2368
<http://smu.edu/facultyclub/>

**Faculty Club at UC Berkeley, The
University of California, Berkeley**

Berkeley, California 94720-6050
United States
Phone: +1 510 540 5678
www.berkeleyfacultyclub.com/

Faculty-Staff Club

San Diego State University

5300 Campanile Drive
San Diego, California 92182-1701
United States
Phone: +1 619 594 5178

Harvard Club of Boston

374 Commonwealth Avenue,
Boston, Massachusetts 02215-2860
United States
Phone: +1 617 536 1260
www.harvardclub.com

Harvard Faculty Club

20 Quincy Street
Cambridge, Massachusetts 02138
United States
Phone: +1 617 495 5758
www.hfc.harvard.edu/

Hilary J. Boone Center

University of Kentucky

500 Rose Street
Lexington, Kentucky 40506-0014
United States
Phone: +1 859 257 1133
www.uky.edu/BooneCenter/

Ida and Cecil Green Faculty Club

University of California, San Diego

9500 Gilman Drive, #0121
La Jolla, California 92093-0121
United States
Phone: +1 858 534 0876
www.facclub.ucsd.edu/

Johns Hopkins Club

Johns Hopkins University

3400 North Charles Street
Baltimore, Maryland 21218-2698
United States
Phone: +1 410 235 3435
www.web.jhu.edu/hopkinsclub

NC State University Club

4200 Hillsborough Street
Raleigh, North Carolina 27606
United States
Phone: +1 919 828 0308
www.ncsuclub.com

Northeastern University Faculty Center

Northeastern University

480 Renaissance Park
Boston, Massachusetts 02115
United States
Phone: +1 617 373 4792

Ohio State University Faculty Club, The

The Ohio State University

181 South Oval Drive
Columbus, Ohio 43210
United States
Phone: +1 614 292 2262
www.ohio-statefacultyclub.com/

Prospect House**Princeton University**

Princeton, New Jersey 08544-0803
United States
Phone: +1 609 258 3455
www.princeton.edu/prospecthouse/

**Quadrangle Club, The
University of Chicago**

1155 East 57th Street
Chicago, Illinois 60637
United States
Phone: +1 773 702 7221
www.quadclub.uchicago.edu/

**Rutgers Club, The
Rutgers University**

199 College Avenue
New Brunswick, New Jersey
08901-8547
United States
Phone: +1 732 932 7139
www.rutgersclub.rutgers.edu/

Stanford Faculty Club**Stanford University**

439 Lagunita Drive
Stanford, California 94305
United States
Phone: +1 650 723 9313
www.facultyclub.stanford.edu/

UCLA Faculty Center**University of California, Los Angeles**

480 Charles Young Drive East
Los Angeles, California 90095-1617
United States
Phone: +1 310 825 0877
www.facultycenter.ucla.edu/

University Club**University of Rhode Island**

95 Upper College Road
Kingston, Rhode Island 02881
United States
Phone: +1 401 874 2911
www.uclub-uri.org/

University Club**The Uiveristy of Iowa**

1360 Melrose Avenue
Iowa City, Iowa 52246
United States
Phone: +1 319 338 5439
www.uclub.uiowa.edu/

University Club**Arizona State University**

425 East University Drive
Tempe, Arizona 85281
United States
Phone: +1 480 965 0700
www.cfo.asu.edu/uclub

**University Club, The
Michigan State University**

3435 Forest Road
Lansing, Michigan 48910
United States
Phone: +1 517 353 5111
www.universityclubofmsu.org/

**University Club, The
University of Massachusetts**

243 Stockbridge Road
Amherst, Massachusetts 01003
United States
Phone: +1 413 545 2551
www.umassuclub.com/

**University Club, The
University of Pittsburgh**

123 University Place
Pittsburgh, Pennsylvania 15260
United States
Phone: +1 412 648 8213
www.uc.pitt.edu/

University Club, The

University of Oklahoma

Oklahoma Memorial Union Building
900 Asp Avenue
Norman, Oklahoma 73019
United States
Phone: +1 405 325 4678

University Club, The

University of Wisconsin - Madison

803 State Street
Madison, Wisconsin 53703-1085
United States
Phone: +1 608 262 5023
www.uclub.wisc.edu/

University Center Club

The Florida State University

Doak Campbell Stadium, USB
Tallahassee, Florida 32306
United States
Phone: +1 850 644 8528
www.universitycenterclub.com

University Club of Boston, The

426 Stuart Street
Boston, MA 02116
United States
Phone: +1 617 266 5600
www.uclub.org/

University Club of Grand Valley State, The

4645 West Campus Drive
Allendale, Michigan 49401
United States
Phone: +1 616 895 3592
www.gvsu.edu/uclub/

University Club of Indiana

Indiana University

Indiana Memorial Union, Room 150
900 East 7th Street
Bloomington, Indiana 47405
United States
Phone: +1 812 855 1325
www.indiana.edu/-uclub/

University Club of Louisville

200 East Brandeis Avenue
Louisville, Kentucky 40208
United States
Phone: +1 502 852 6996
www.uclublouisville.org/

University Club of MU, The

University of Missouri

107 Reynolds Alumni Center
Columbia, Missouri 65211
United States
Phone: +1 573 882 2586
<http://uclub.missouri.edu/home/>

University Club of Nashville

2402 Garland Avenue
Nashville, Tennessee 37212
United States
Phone: +1 615 322 8564
www.uclubnashville.org/

University Club at Penn

University of Pennsylvania

3611 Walnut Street, Second Floor
Philadelphia, Pennsylvania 19104-3896
United States
Phone: +1 215 898 4618
www.upenn.edu/universityclub/

University Club San Francisco

800 Powell Street
San Francisco, California 94108
United States
Phone: +1 415 781 0900
www.univclub.com

University Club of St Paul

420 Summit Avenue
Saint Paul, Minnesota 55102
United States
Phone: +1 612 222 1751
www.universityclubofstpaul.com/

The University Club at The University of Alabama

421 Queen City Avenue
Tuscaloosa, Alabama 35401
United States
Phone: +1 205 348 4848
www.universityclub.ua.edu/

University of Washington Club, The University of Washington

Box 354420
Seattle, Washington 98195-4420
United States
Phone: +1 206 543 0437
www.uofwashingtonclub.org

USC University Club

705 West 34th Street
University of Southern California
Los Angeles, California 90089-1541
United States
Phone: +1 213 740 2030
www.universityclub.usc.edu/html/

Wellesley College Club

727 Washington Street
Wellesley, Massachusetts 2482
United States
Phone: +1 781 283 2700
www.wellesleycollegeclub.com/

Whittemore House

Washington University in St. Louis
6440 Forsyth Boulevard
St. Louis, Missouri 63105
United States
Phone: +1 314 935 5210
whittemorehouse.org/

Willits-Hallowell Conference Center Mount Holyoke College

50 College Street
South Hadley, Massachusetts 01075
United States
Phone: +1 413 538 2217
www.mtholyoke.edu/willits

Women's Faculty Club, The University of California,

Berkeley Mail Code 6055
Berkeley, CA 94720
United States
Phone: +1 510 642 4175
www.womensfacultyclub.com

Carparking

The Four-Storey Graduate House carpark:

- is secure
- is accessible from 7:30am to 11:30pm, seven days a week for casual parking
- is accessible 24 hours a day, seven days a week for long term agreements
- may be booked for a day (flat rate) or longer
- has the best rates in the Graduate Precinct
- has over 50 car spaces

Casual Parking — Per day

Members*	\$12.50
Daily Members	\$17.50
Non-Members	\$20.00

The parking rates for casual parking is applicable for the parking of one vehicle in the Graduate House carpark.

Longer Term Agreements*			
	Non-Members	Members	Residents
Month	\$330.00	\$260.00	\$190.00
1–6 Months	\$310.00	\$240.00	\$170.00
6 Months+	\$290.00	\$220.00	\$150.00



Communications

Publications

Publications remain our main and most efficient communication platform. Our Newsletters are circulated bi-monthly. Extra important information, coming events and updates are sent out to members whenever necessary. Our publications library is available on the Graduate Union website, allowing our site visitors to browse through all of our publications online through a sophisticated and user-friendly interface with features including full-page view, zoom and sharing.

Website

The Graduate Union website is easy to use, allowing visitors to find information quickly, and act upon that information. A popular feature of the website is the coming events calendar. Users can select their preferred view (calendar form, list view in per month or day) and browse our event listings, easily booking their places online. Our website enables online membership applications, fee payments and renewals, feedback and contact, accommodation availability and applications for residency, merchandise purchasing, booking to attend GU Collegiate and other functions, car park bookings, as well as donations.

Social media

The Graduate Union online presence is built upon our social media channels. They are LinkedIn, Twitter, Youtube, Facebook, and Instagram.

Our contents in each channel is on current happenings within Graduate House - from information on coming and past events, to photos, celebrations, editorial excerpts and links of note. Our posts and pages provides a glimpse of life from Graduate House, simultaneously promoting our offerings.

We have three Facebook sites. **Graduate House** is our formal 'face' at which you can post and like stories relating to graduates internationally. **Graduate House Residents' Page** is for those who come and go from our college, so feel free to post Graduate House news, social functions, excursions and volunteer opportunities. **Graduate Union College Alumni** is for past residents of Graduate House since this residential college opened in 1962



GU Collegiate Events

Graduate House promotes lifelong sharing of knowledge and skills; and educational outcomes for wider public benefit through our relationships with like minded organisations around the world who share our enthusiasm for fostering academic, career and social experiences.

Monthly Luncheons

On the first Wednesday of each month (excluding January, July and December), alternating between Lunch and Dinners, join us for a two course meal, wine and an entertaining and informative presentation by a distinguished guest speakers. Topics range from politics, to art and culture, medicine and health, law and humanities, the world and society, etc.

Women's Forum

Join an eclectic and friendly group of women in a lively discussion on contemporary issues and topics. The Women's Forum is held on the third Wednesday of each month at 10:00am in the Anderson Library. Lunch is option, following the Forum.

















Bridge Nights

Held every Wednesday from 7:15pm to 9:30pm, Bridge Nights are a fantastic opportunity to play social Bridge.



Merchandise

Graduate House has an extensive range of quality clothing and gift products, perfect for yourself or as a gift. Purchase at Reception or from www.graduatehouse.com.au/join-us/merchandise/

			
Women's and Men's Crew Neck T-Shirt \$30.00	Men's Polo \$42.00	Knitted Vest \$50.00	Windcheater with hood \$50.00
			
Women's and Men's Merino Pullover \$110.00	Women's Polo \$42.00	GU Tie \$25.00	GU Bow Tie \$25.00
			
Winter Scarf \$35.00	Scarf — Beach to Sea \$35.00	Scarf — Our Land \$35.00	Latte Glass (red or black holder) \$12.25
			
Metal Handbag Holder \$15.00	Diamond Jubilee Cufflinks \$104.00 or with Diamond inset \$195.00	Elegant Pen \$5.00	One Card \$2.00 or Five Cards \$10.00 (Includes Envelopes)

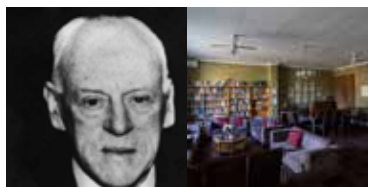
We Acknowledge some of our Donors

Graduate House has a proud history of benefaction and a strong culture of recognising our benefactors. Here are some of the ways in which previous members have been remembered. Donating to Graduate House goes a long way towards ideals such as lifelong learning and national and international reciprocity. We look to continue our pivotal roles in nurturing the many early career graduates who stay in our college each year and supporting the many in-career academics, professionals and retired members of Graduate House who live and work all over the world. We will continue to be a hub for networking and contact for the thousands of people who visit our beloved Graduate House each year.



William Berry

Due to his driving effort to attain the terraces which are now an iconic part of Graduate House, the William Berry Wing is named in honour of the founder of our college — the eleventh college affiliated to The University of Melbourne.



M V Anderson

Naming of the MV Anderson Room, an elegant and comfortable Member-only area, is in recognition of this renowned accountant and philanthropist's contribution of leadership and significant gifts.



Sidney Myer

Following a banquet at Menzies Hotel in 1926, sponsored by our Association, Mr Sidney Myer bestowed a large endowment which secured the future of our Monthly Luncheons which continue to this day.



Sir William Johnston

This library, named in honour of Sir William Johnston, our second President, has been enjoyed by generations of postgraduate scholars from all parts of the globe.



Stella Langford

Her generous donation enabled the purchase of three terraces, the street frontages of which remain at the 2010-opened Stella Langford Wing of ten apartments, a multi-storey car park and state-of-the-art meeting facilities.



Phillip Law

A major bequest from this famous Antarctic explorer enabled many building works and was acknowledged with the naming of the Phillip Law Members' Lounge in late 2012.



Sir Ian Potter

The Ian Potter Room is a well frequented meeting room, so named to honour a large donation from The Ian Potter Foundation in 1987 to refurbish the dining area, at that time on the ground floor of the terraces.



Dr Thomas R A Davey

The generous bequest from Dr Ron Davey was put towards the repair of the terrace roofs, now known as the Davey Lofts.



Frank Leslie Stillwell

A 1963 bequest from this famous petrologist, after whom the mineral Stillwellite is named, was put to the Stillwell Room, initially the common room in the terraces, and now a meeting room in the main building.



Dr Elizabeth Shaw (right)

Friends of The University of Melbourne Charitable Trust

The Trust was established for the purpose of receiving from UK-based donors who wish to support The University of Melbourne. Each year, Dr Elizabeth Shaw sends donations for the upkeep of the Stillwell Room named in honour of her ancestors.



Neil Taylor



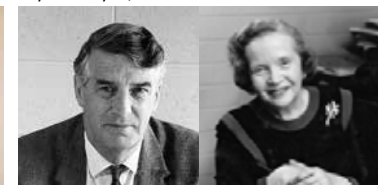
Foyer to Taylor, Hewlett and Cochrane Room

Taylor Room, Hewlett Room and Cochrane Room

The ground floor rooms of the Stella Langford Wing are named to acknowledge the generous donations from Marjorie Hewlett Atkinson for her great aunt Annie Hewlett, from past Chair of Council, Neil Taylor, and from Life Members Fiona and Andrew Cochrane for their parents, Professor Donald Cochrane and Margaret Schofield OAM.



Marjorie Hewlett Atkinson



Professor Cochrane and Margaret Schofield OAM



THE GRADUATE UNION
of The University of Melbourne Inc.

220 Leicester Street, Carlton, Victoria 3053, Australia
Telephone: +61 (0)3 9347 3428

Australian Business Number: 55 610 664 963
Incorporated Association Registration Number: A0023234B